

**Sovereign Harbour
LNTM 12-2024**

Eastbourne International Air Show

15th to 18th August 2024

All Mariners are once again reminded of the Exclusion zone in place for the Eastbourne International Air Show. No vessels including jet skis, paddle craft or swimmers are permitted within the area shown below.

Vessels wishing to anchor to watch the display must remain 50mtrs seaward of the line of yellow buoys between the Hollywell Tea Challet to the West and the Metropole Hotel to the East.

Control & safety vessel "Excalibur" will be on station throughout and is contactable via VHF on Ch73

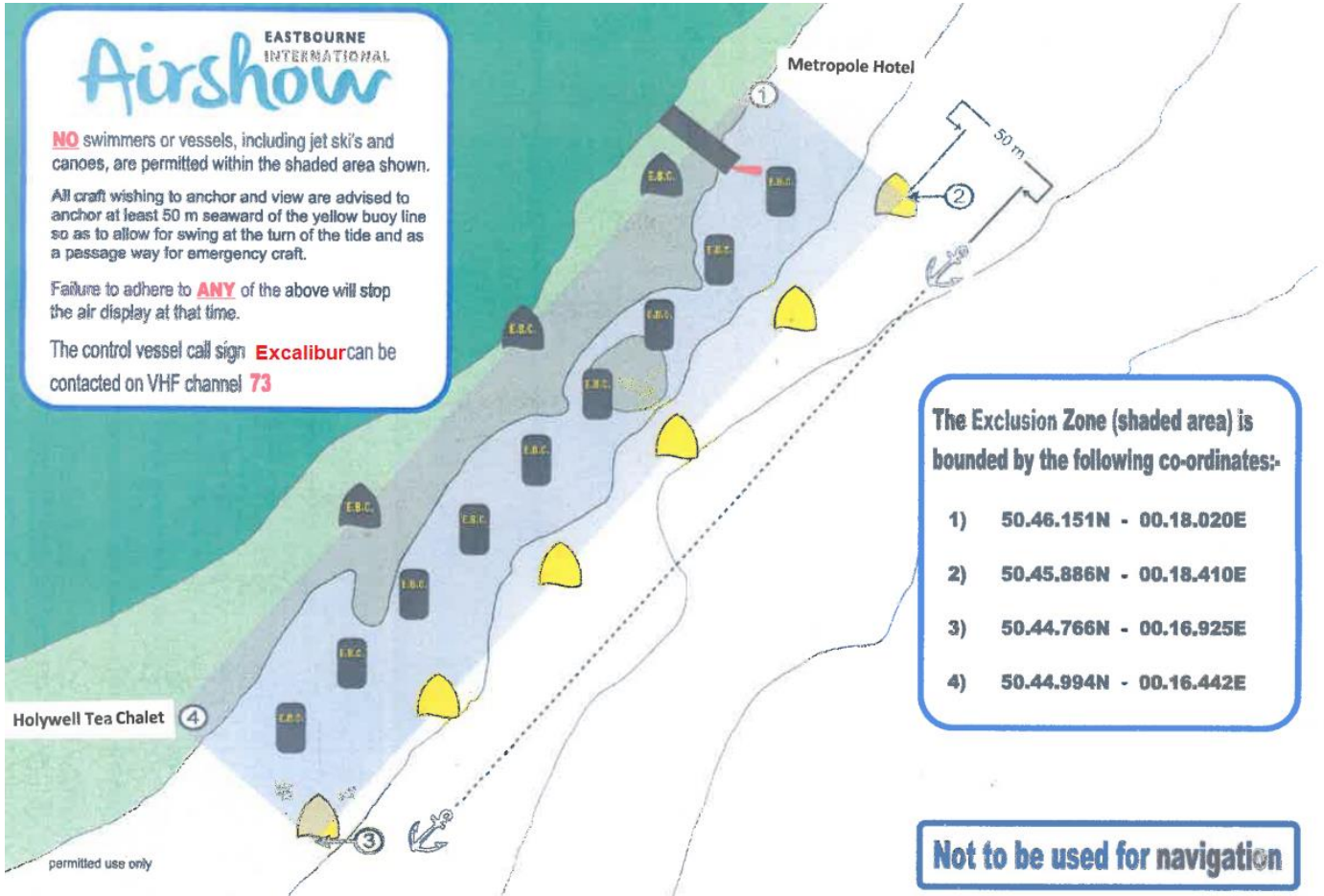
Locks will be busy throughout the four days, please plan ahead to avoid busy times and be aware of the likely top up times. Lock Keepers and Lock Packers will be present to assist in maximising lock efficiency. Please take their instruction. Any abusive behaviour towards staff will not be tolerated.

It is essential that vessels wishing to use the locks have boat names visible bow and stern and are able to communicate with Sovereign Harbour via VHF Ch17.



PREMIER
SOVEREIGN HARBOUR

Local Notice to Mariners 12-2024



Mariners may contact
'SOVEREIGN HARBOUR'
On VHF Channel 17 for advice
This notice to remain in force until 23:59hrs 18/08/2024

The Harbour Office can be contacted (24hrs)
VHF Ch.17, by telephone (01323 470099) or via email at
eastbourne@premiermarinas.com

Premier Marinas (Eastbourne) Ltd

Issued by: D Heckford, Harbour Master
5th August 2024 11:30hrs